



EMERALD GREEN

EMERALD GREEN



Key benefits

- Biodegradable
- No toxic residues
- Organically produced
- Crop multi nutrients
- Crop antitranspirant
- Plant heat shield
- Plant fire shield



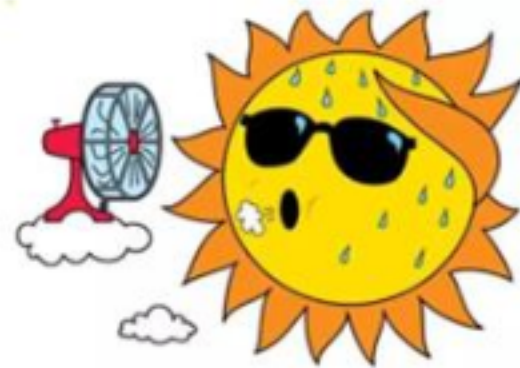
Phosphorous based residues from existing fire retardants promote algae blooms which remove oxygen from waterways and lakes, while also releasing toxins



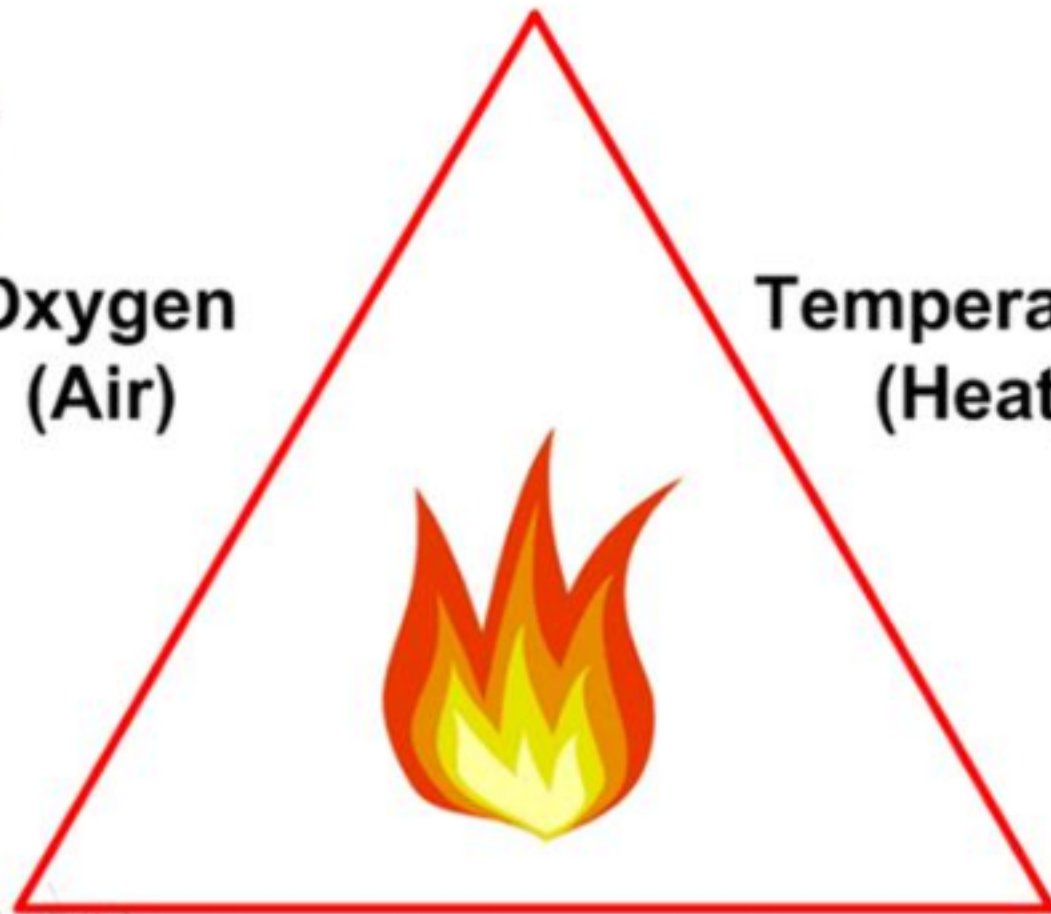
What fires need to start and grow



Oxygen
(Air)



Temperature
(Heat)



Fuel

How wildfires spread

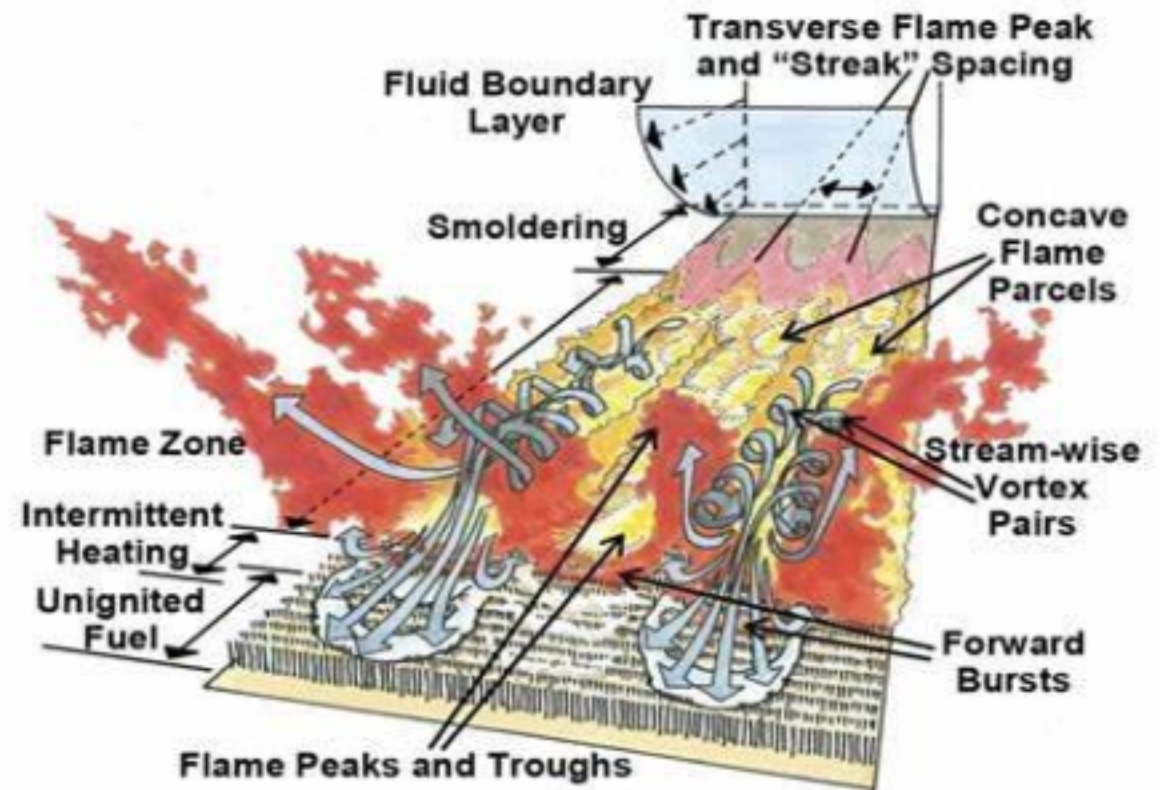
It's convection, not radiation that governs fire spread. Radiant heat is the warmth you feel standing next to a campfire.

Convective heat is the burn you get when an ember lands on your foot.

In the case of a wildfire, it's the superheated gases released by combustion that ignite more fuel.

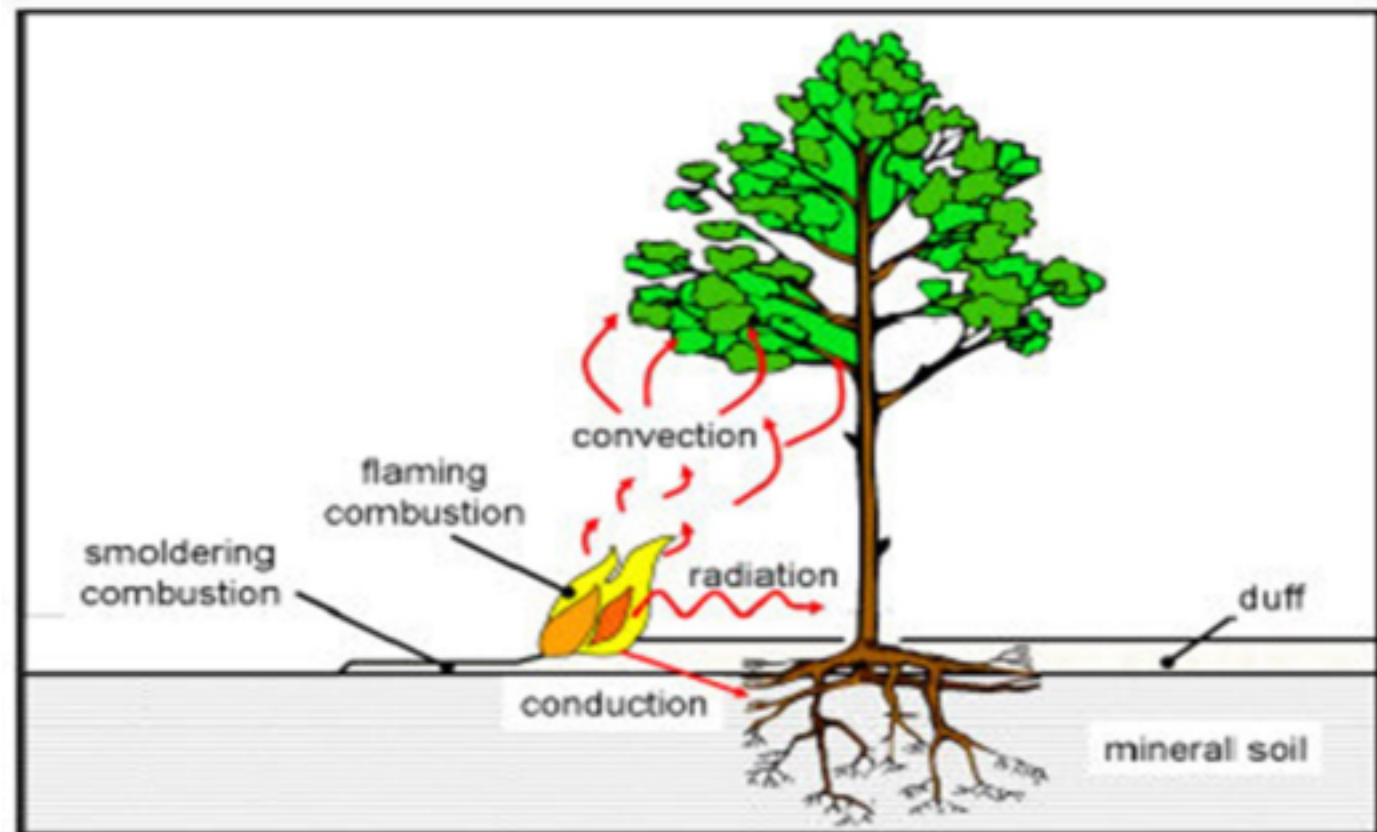
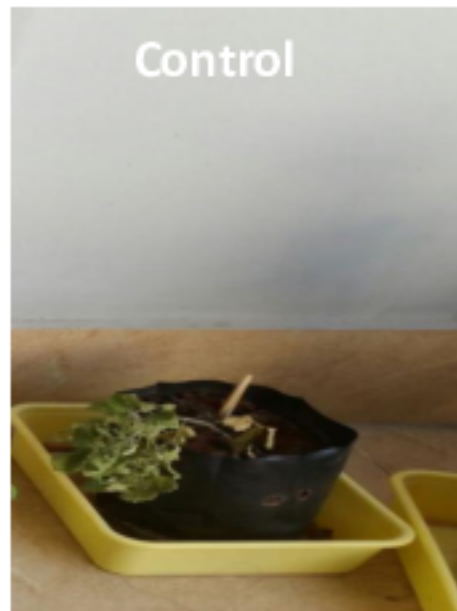
EMERALD GREEN stops plants from being dried by superheated gasses.

GREEN LEAVES DON'T BURN



How **EMERALD GREEN** stops fires

Plants were exposed to intense heat and smoke simulating a fire within a controlled experiment by a research team at Chennai university, India. The bio-silicon shield of **EMERALD GREEN** resisted the intense heat and restricted water loss from the body of the plant while still permitting plant stomatal respiration.



75% of areas destroyed by wildfires are farms

The first possible responders to wildfires are farmers!

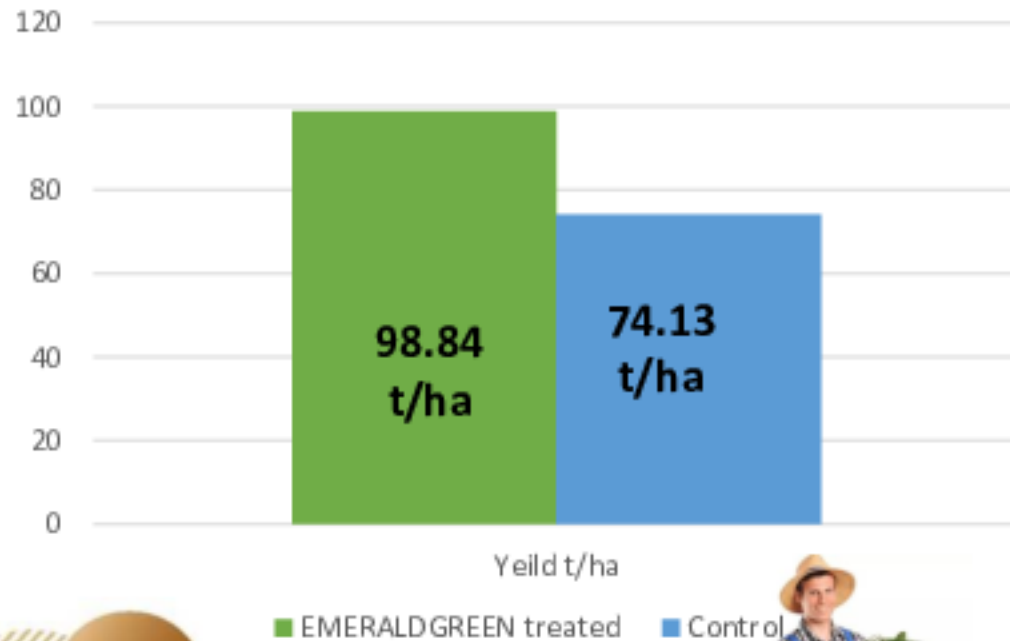
EMERALDGREEN provides considerable crop benefits to farmers, thereby ensuring that a suitable fire retardant is readily at hand to fight wildfires when they occur.

EMERALDGREEN significantly increases crop health, quality, and yield, while also reducing water demand by up to 30%.



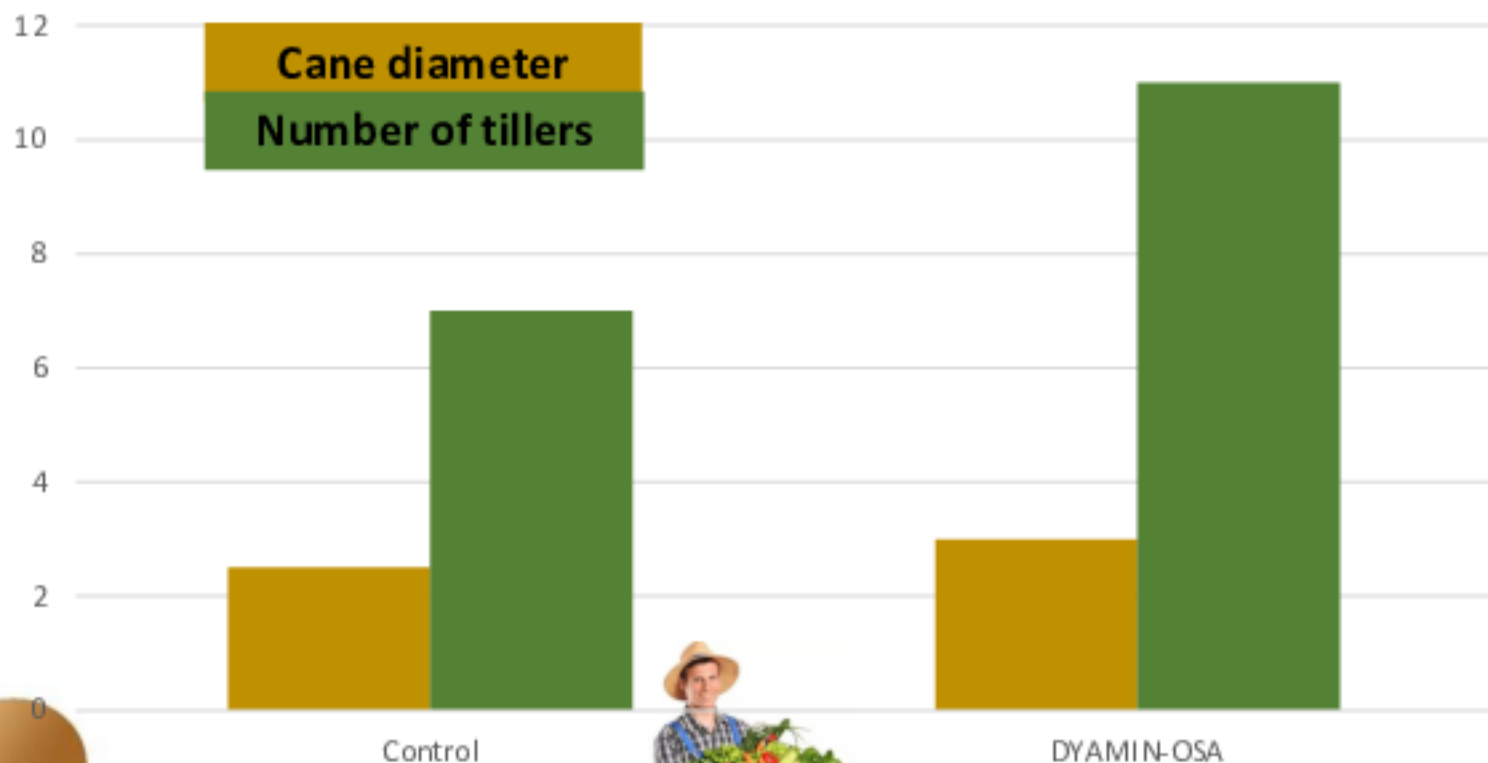
EMERALDGREEN improves the physical functionality of cells throughout the plant.

Banana crop trial
Identical levels of applied fertilisers



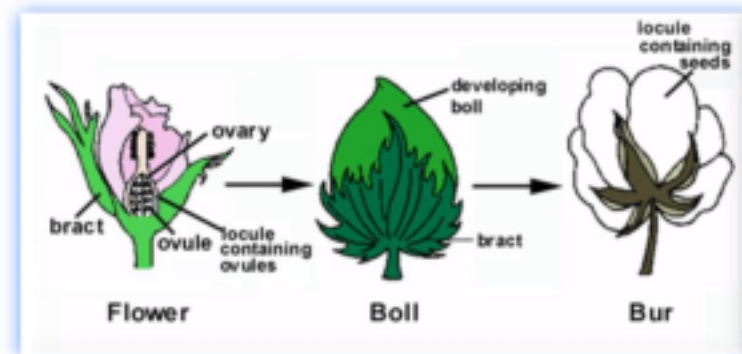
EMERALDGREEN improves the physical functionality of cells throughout the plant.

Sugarcane Trial



EMERALD GREEN improves the physical functionality of cells throughout the plant.

Avoiding water-deficit stress in Cotton is critical to set high yield and quality. The Boll is the fruit of cotton plants. Fruit retention can be at a high risk of water drought stress during the first 30 days of Boll development.

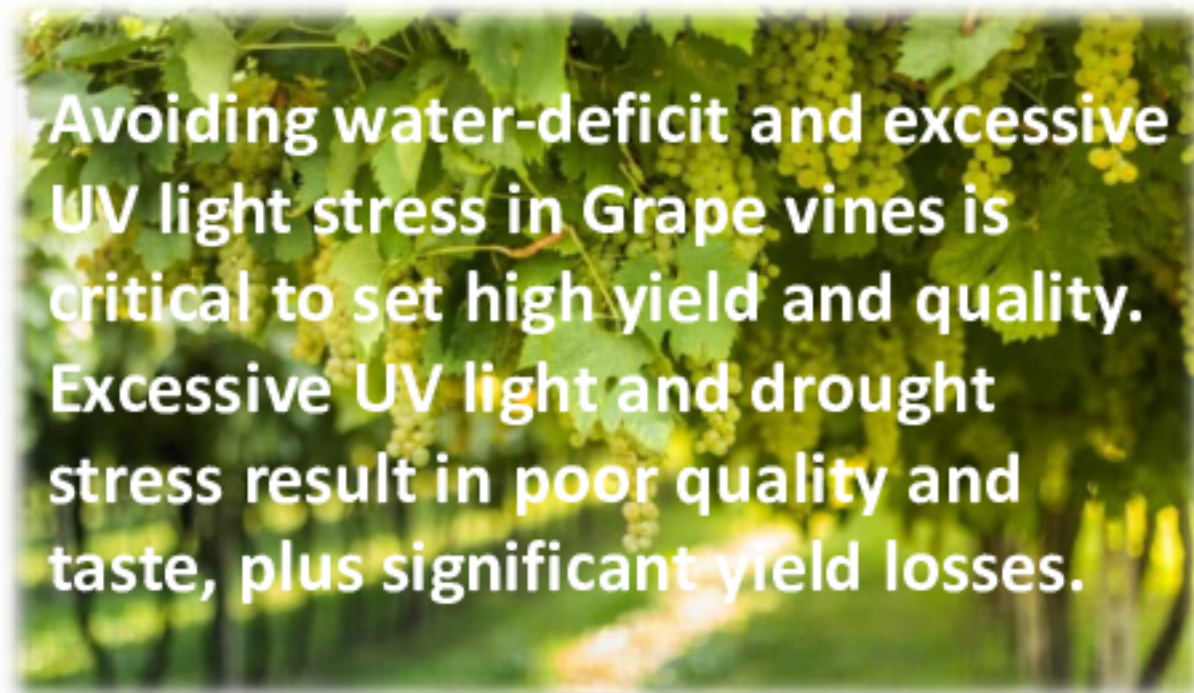


EMERALD GREEN improves the physical functionality of cells throughout the plant.

The most important time for protection of Corn is from the 12 leaf stage (V12) until end of cob filling stages. Avoiding water-deficit stress is critical to set high yield and quality. Reduced grain yield can be at a high risk due to water drought stress.



EMERALD GREEN improves the physical functionality of cells throughout the plant.



Avoiding water-deficit and excessive UV light stress in Grape vines is critical to set high yield and quality. Excessive UV light and drought stress result in poor quality and taste, plus significant yield losses.



In SOYA, Avoiding water-deficit stress is critical to set high yield and quality.

Seed abortion can be at a high risk due to water drought stress during pod and seed development.





**Eco-friendly
biodegradable foliage
encapsulating heat and
fire shield**

**In addition to being a high ROI
product for farmers. This is a
highly efficient fire retardant!**





Atlantic Power & Infrastructure Corp.

(OTC: AWSL)

4600 140th Ave N Ste 200,
Clearwater, FL 33762

Tel: +1 (727) 723-3300

Web: www.apaicrp.com

EMERALD GREEN

Biodegradable fire retardant

- Foliar encapsulating silicon shield
- Eco-friendly, organic and fully biodegradable
- Reduces fire convection ability to dry out foliage
- **GREEN LEAVES DON'T BURN!**

